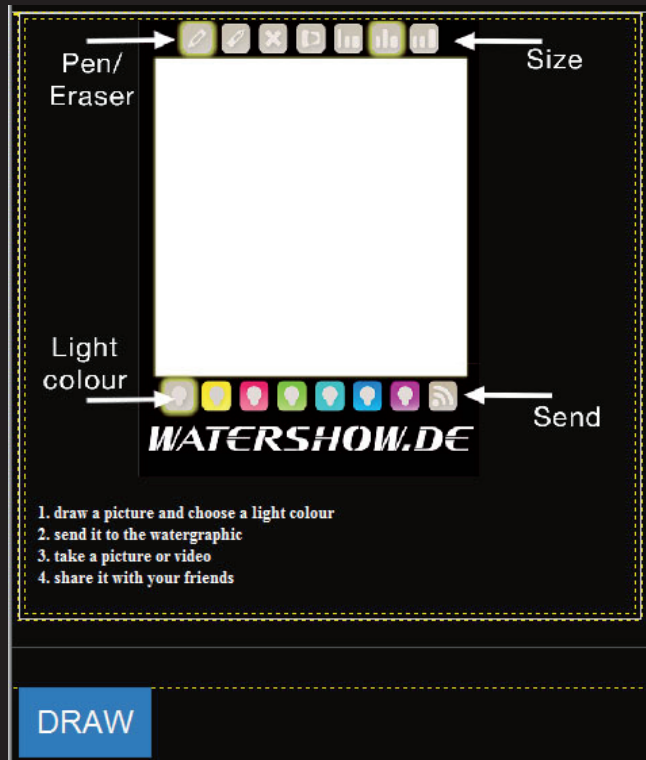


2G Watergraphic - Functions

2GWF Watergraphic Web-Frame:

our Watergraphic Touch Web Interface. Without any App or WLAN, only over your mobile network. In a normal Browser the guest can open the website, draw at the implemented Touch, send it to the watergraphic and share it directly on Facebook



2GMS Watergraphic Multiscreen:

Only one system - different pictures or input sources at once. With this option you can supply our watergraphic system with different pictures from different sources simultaneously.



2GT Watergraphic Touch- the interactive toy:

Draw > Send > Watch

It takes only two seconds until you can watch your drawing on our interactive Watergraphic system. You simply draw your picture on a HTML compatible unit by using your fingers and our system immediately transforms your drawing into a watergraphic



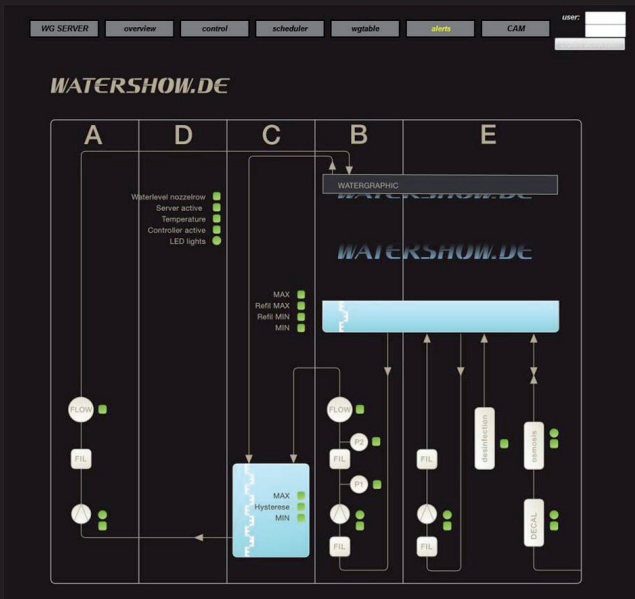
2GD Watergraphic Door:

Ultra-fast sensor system for safe crossing. This is a special sensor unit that activates a predefined area as a passage through the waterscreen.



2GMC Watergraphic Main Control:

Our latest development is an IP-based and I²C bus aided stand-alone monitoring and control system which observes and controls the operating states of the whole system



2GUDP:

We developed this new UPD real-time interface to allow the external control of each valve. The system can be integrated easily in our existing multiscreen concept.

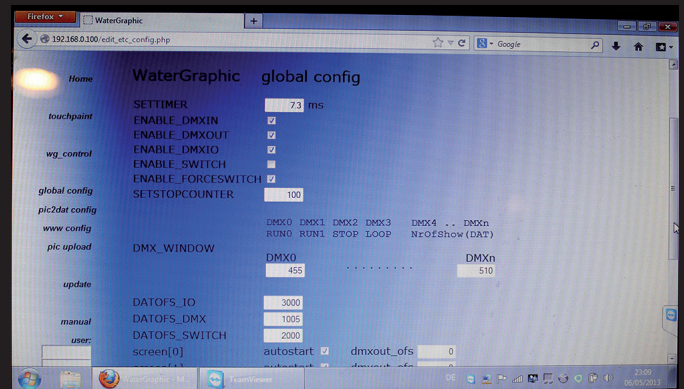


2GWC Watergraphic Web Control Center:

A web-based tool to easily control our Watergraphic systems.

We developed a smart web-tool which allows you to change all settings and configurations using clear text now

ion	unit	id	var	manuf.	IO	function	all	sess/act	grp	prt	i2c	type	min	max	emp	st.	val
antube	main power switchboard	270a1				input voltage L1		input voltage L1	0	1	0x100	sensor	210	245	230	0	230.75
		293a2				input voltage L2		input voltage L2	0	2	0x100	sensor	210	245	230	0	230.98
		257a3				input voltage L3		input voltage L3	0	3	0x100	sensor	210	245	230	0	231.50
		354a4	Konrad			emergency stop		emergency stop	0	1	0xa5	actor	0	0	0	0	0
		355a5	Konrad			watergraphic server		watergraphic server	0	1	0xa5	actor	1	0	0	0	1
		356a6	Konrad			led lights		led lights	0	1	0xa5	actor	0	0	0	0	0
		357a7	Konrad			INTERN Option restart		WGINTERN restart	0	1	0xa5	actor	0	0	0	0	0
		334a8	Konrad			emergency stop active		emergency stop aktiv	0	1	0xa5	sensor	1	0	0	0	0
		258b1	Konrad			pump filter		pump filter	0	3	0xa5	actor	1	0	0	0	0
		259b2	Konrad			pump clean		pump clean	0	3	0xa5	actor	1	0	0	0	0
		321b5	Konrad			flow filtercircle		flow filter circle	0	3	0xa5	sensor	1	1	1	0	1.00
		322b6	Konrad			flow cleanwatercircle		flow clean water cir	0	3	0xa5	sensor	1	1	1	0	0.00
		323b7	Konrad			pump failure filter		pump fail filter	0	3	0xa5	sensor	0	0	0	0	0.00
		324b8	Konrad			pump failure clean		pump fail clean	0	3	0xa5	sensor	0	0	0	0	0.00
		246b9	Druk	A		filter pressure A in		filter press A in	0	4	0x28	sensor	0	0	0	0	367.58
		247b10	Druk	B		filter pressure B out		filter press B out	0	5	0x28	sensor	0	0	0	0	360.38
		248b11	virtual			filter pressure diff(A,B)		Pressure diff AB	0	5	0xfdc	sensor	0	550	0.5	0	427.76
		246b12				clean pressure C in		filter press A in	0	4	0x28	sensor	0	0	0	0	369.58
		247b13				clean pressure D out		filter press B out	0	5	0x28	sensor	0	0	0	0	460.18
		362b14	virtual			clean pressure diff(C,D)		Pressure diff AB	0	5	0xfdc	sensor	0	550	0	0	427.76
		252a1	Konrad			refill		Refill A	0	2	0xa5	actor	0	0	0	0	0
		317c5	Konrad			basin max		basin max	0	2	0xa5	sensor	1	0	0	0	1.00
		318c6	Konrad			basin refill max		basin refill max	0	2	0xa5	sensor	1	0	0	0	1.00
		319c7	Konrad			basin refill min		basin refill min	0	2	0xa5	sensor	1	0	0	0	1.00
		320c8	Konrad			basin min		basin min	0	2	0xa5	sensor	1	1	0	0	1.00
		326c13	Konrad			tank max		tank max	0	2	0xa5	sensor	1	0	0	0	1.00
		327c14	Konrad			tank hysteresis		tank hysteresis	0	2	0xa5	sensor	1	1	0	0	1.00
		328c15	Konrad			tank min		tank min	0	2	0xa5	sensor	1	1	0	0	1.00
		1	41	Konrad		tank temperature		Inters temp allact	0	0	0x2	sensor	0	50	30	0	33.18
		358e2	Konrad			Ctrl Power		ctrl power	1	0	0xa5	actor	1	0	0	0	0
		359e2	Konrad			server on option		server on option	1	0	0xa5	actor	0	0	0	0	0
		346e5	Konrad			server active		Server active	1	0	0xa5	sensor	1	1	0	0	1.00
		347e6	Konrad			waterlevel nozzleflow		waterlevel nozzleflow	0	0	0xa5	sensor	1	1	0	0	1.00
		348e7	Konrad			controller active		ctrl active	1	0	0xa5	sensor	1	1	0	0	0.00
		113e9	Konrad			Ctrl 1 temp 1		Ctrl 1 temp 1	1	1	0x1	sensor	0	60	40	0	23.50



Watershow.de GmbH
 Phone +49 9395 - 87 88 975
 E-Mail sales@watershow.de
 Web https://watershow.de/