

2G WATERGRAPHIC FOR PERMANENT INSTALLATION
Waterscreen that forms letters and signs via bitmap files
Resolution 48 or 96 valves per meter

THE ADVANTAGES:

- > 100% of product by watershow.de - Made in Germany
- > Self-developed electronic, designed for our systems' solution
- > Since 2005 Watergraphic as a repetition part
- > Since 2008 new, worldwide unique, self cleaning nozzles
- > New in 2013: maincontrol, a monitoring and control system
- > High nozzle resolution of 96 valves/meter
- > Low water pressure system = letters fall down slowly, only accelerated by gravitation
- > High speed controller with 5ms valve opening/closing time
- > Displays with 200-500 lines per second
- > Continuous pressure regulation without slowing frequency
- > Unique control system to start the whole line of nozzles at the same moment
- > 100% self-developed software (no windows)
- > Low energy consumption
- > Every component is easy to change and maintain
- > Control via Remote DMX, Artnet, MA-NET
- > DMX OUT for 100% synchronous Lightcontrol
- > Fast and modular channel installation concept
- > High end lights only from the top
- > We train your technicians on installation live in Wuerzburg

2.G WATERGRAPHIC – Possibilities for permanent installations

- VERSION Compact 2GC - high resolution
... the Plug&Play Solution, easy and uncomplicated Watergraphic with frame and cover.
A complete solution with housing and quick installation, available in 3m and 4m width.
Covering available in black and in white.

- VERSION 2G+96 - high resolution :
... the individual solution
specially designed to your needs
For more complex writings and logos with maximum contrast
96 nozzles per meter in two rows
Solution for screens up to 4m length

>Due to the standardized segmentation it is possible to realize even curves, circles and individual shapes.



OPTIONS:

MAIN CONTROL: Monitoring and Control System

Functions:

- > Touch PC for controlling and monitoring the system
- > Web diagnostic with Logbook
- > Recognition of critical states still before achievement restriction
- > Web Interface for monitoring the state of the system in realtime
- > Check-up of the power supply
- > Monitoring of the water pumps and water flow
- > Is there water in the valve system?
- > Water Tank Level monitoring
- > Control of the water tank refill system
- > Switch-on off the main controller
- > Temperature monitoring
- > Monitoring of the filter systems

LIGHT SYSTEM:

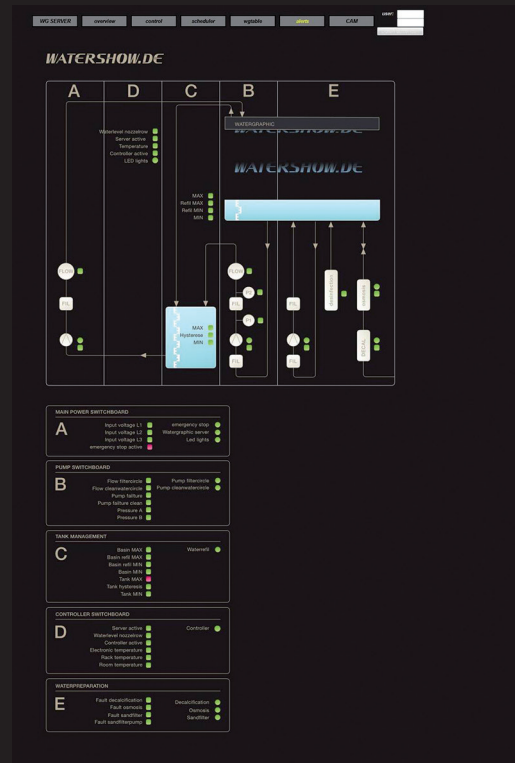
- > LED RGB High END 9x3W TriLed 20° 0,5m segments
- > Ip 65 controlled by DMX
- > In 3 lines = 54W/m

ADD ON:

- > Splash protection for basin (black 3D texture)
- > Watergraphic Touch-the interactive toy painting>posting>viewing
Only two seconds until you see your painting on our WATERGRAPHIC.
You paint your picture with a unit who understand HTML and we reproduce your painting as a watergraphic.
Input with every HTML unit(i.e.Ipad,Iphone or Android)

PROGRAMMING BMP FILES:

- > Storyboard by customer
- > Production BMP first show in Wuerzburg
- > You get examples for your show
- > You can draw your own bmp shows very easily
- > You can upload your shows very easily
- > After the first demonstration we're sure you can program by yourself



Watershow.de GmbH

Phone +49-9395-8788975

E-Mail sales@watershow.de

Web <https://watershow.de/>